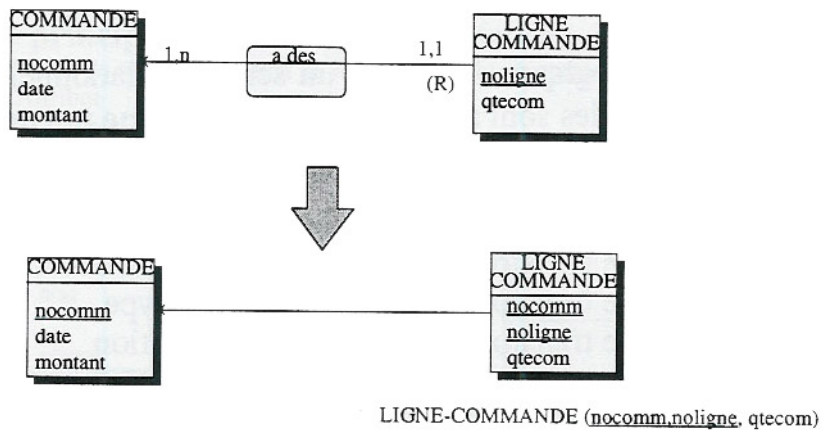


## UE Modélisation des systèmes d'information Conception et étude d'un MLD

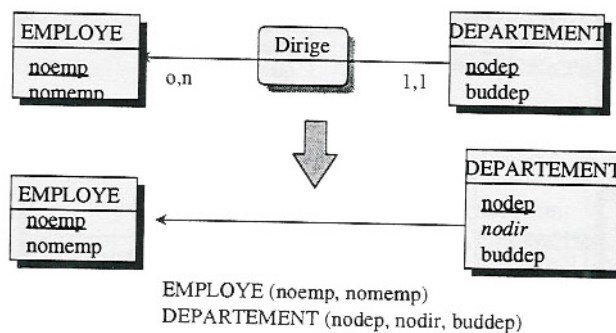
### Exercice 1 :

Pour chacun des cas "mini-MCD" suivants, donner le MLD correspondant :

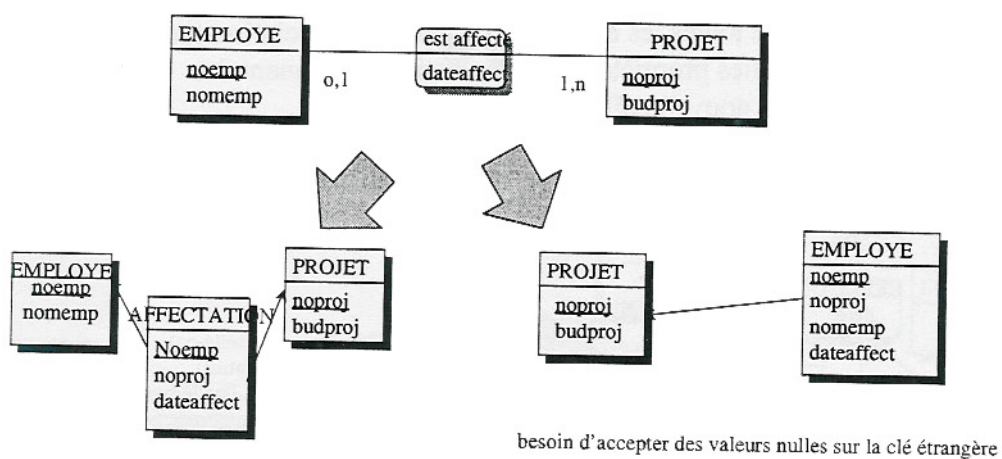
#### MCD 1 :



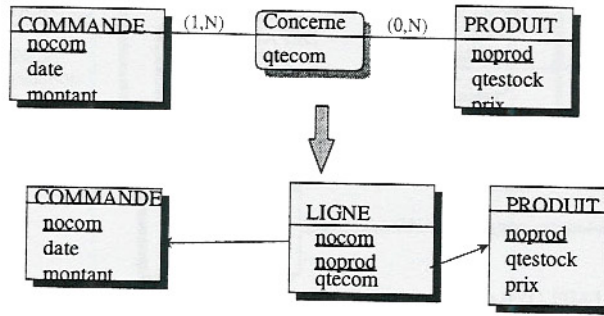
#### MCD 2 :



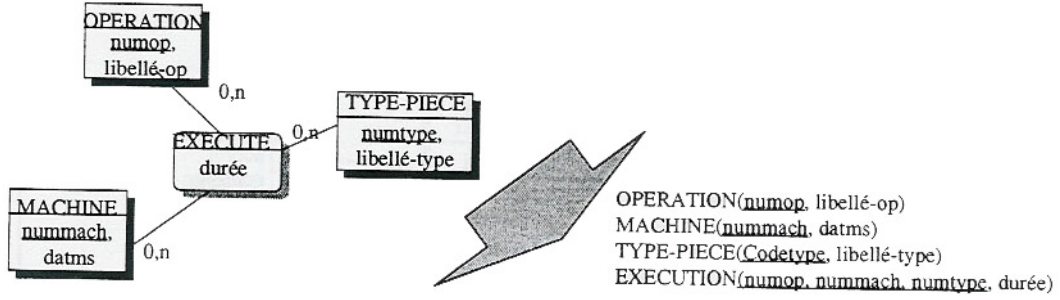
#### MCD 3 :



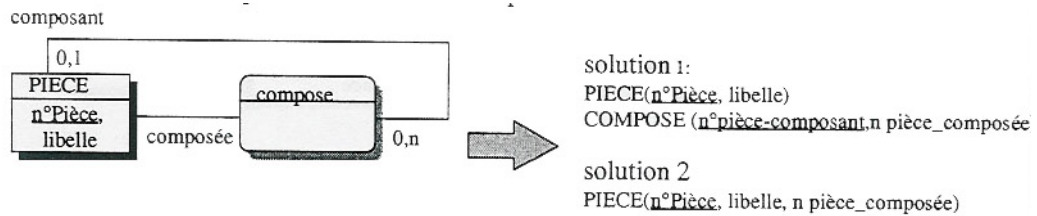
#### MCD 4 :



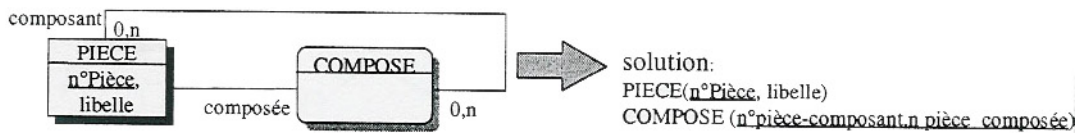
MCD 5 :



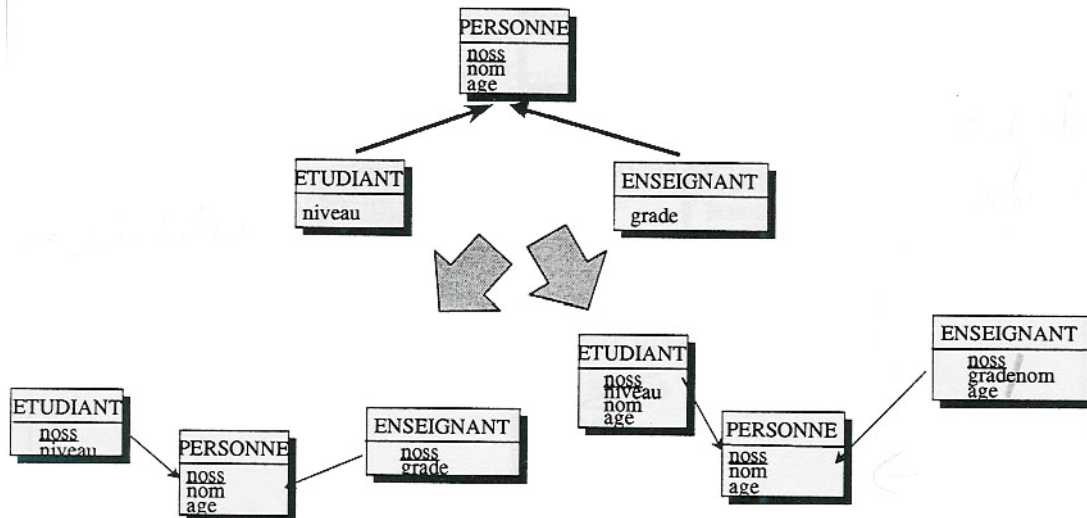
MCD 6 :



MCD 7 :

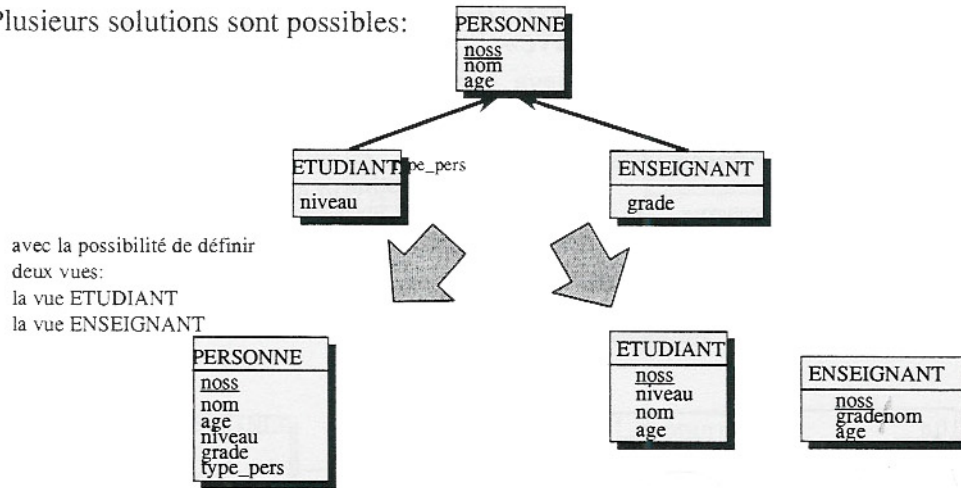


MCD 8 :

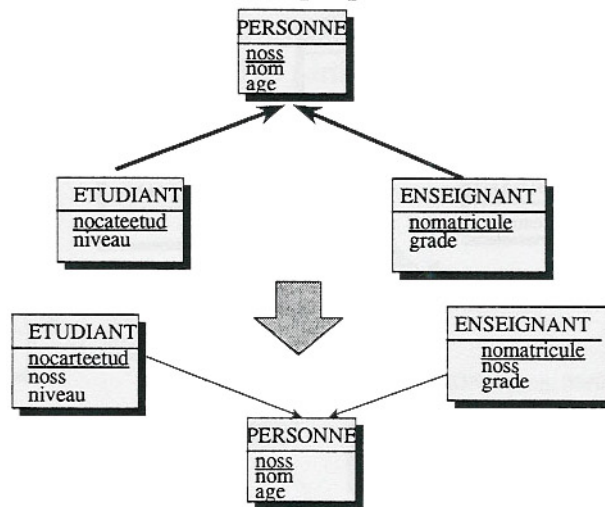


MCD 9 :

Plusieurs solutions sont possibles:

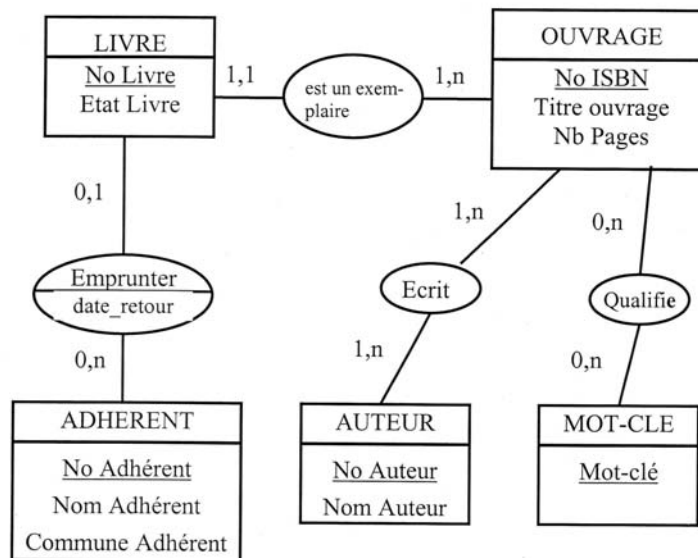


MCD 10 :



Exercice 2 :

Proposer le MLD correspondant au MCD donné ci dessous :



LIVRE (No\_Livre, Etat\_Livre, No\_ISBN)  
 OUVRAGE (No\_ISBN, Titre\_ouvrage, Nb\_Pages)

ADHERENT (No\_Adherent, Nom\_Adherent, Commune\_Adherent)

AUTEUR (No\_Auteur, Nom\_Auteur)

MOT-CLE (Mot\_cle)

Emprunter (date\_retour, No\_Livre, No\_Adherent)

Ecrit (No\_ISBN, No\_Auteur)

Qualifie (No\_ISBN, Mot\_cle)